

GARMIN® Give an Edge® \$50 Mail-In Rebate

To qualify for the Give an Edge Mail-In Rebate, **please complete the following:**

1. A purchase of a qualifying Edge GPS cycling computer is required to qualify for this promotion. Purchase the qualifying products from **Nov. 1, 2018, through Nov. 30, 2018**, and receive \$50 USD via mail-in rebate when using the official Garmin rebate form. Limit 3 rebate submissions per customer. The product must be purchased in factory-new condition. All submissions must be postmarked by **Dec. 30, 2018**.
2. **Read and complete** this rebate coupon. If you seek more than 1 rebate, please complete a separate rebate coupon for each submission.

PLEASE PRINT CLEARLY

GARMIN DEALER

PURCHASE DATE

CUSTOMER NAME

ADDRESS

CITY/STATE

ZIP CODE or
POSTAL CODE

Note: Rebate checks will be mailed only to U.S. or Canadian addresses.

PHONE NUMBER

EMAIL

Note: Your email address will be used only for correspondence about this rebate offer.

3. Enter the serial number of your qualifying Garmin product below.

Edge 520 9-digit serial number:

4 3 V

Edge 520 Plus 9-digit serial

5 M L

Edge 820 9-digit serial number:

4 R L

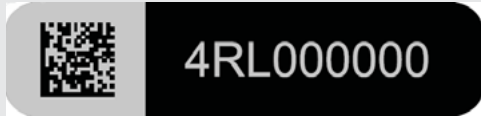
Edge 1030 9-digit serial number:

5 7 6

Need help locating the serial number?

Serial numbers consist of 9 letters or numbers (without spaces or dashes) and can be found on a label on the gift box or Garmin device. See below for placement details.

Label example:



4. **Enclose** a legible copy of your valid receipt. The receipt documentation must show the purchase date, the item purchased and the name of the qualifying Garmin authorized dealer. The products must be purchased in factory-new condition. You may purchase the products online or in a store. **We do not accept PayPal™ receipts. eBay purchases only valid if purchase is made from an authorized Garmin dealer.**
5. **Enclose** your original UPC bar codes after cutting them out of the packaging of your qualifying Garmin products.
UPC BAR CODE? Garmin UPC bar codes consist of 12 numerical digits where the first 6 numbers are 753759 and are followed by 6 additional numbers. They can typically be found on the bottom or back panels of the packaging.

Please Note: If a valid receipt is not included, this will cause delays in processing your rebate. This rebate claim form does not qualify as a receipt or proof of purchase. Receipt showing purchase of the item is required with this form. If any information is missing and your claim has to be resubmitted, this will restart the 6-10 week processing period.

6. **Mail** your submission (postmarked by **Dec. 30, 2018**) to:

**Promotion #84979
Give an Edge \$50 Mail-in Rebate
P.O. Box 22092
Tempe, AZ 85285-2092**

For questions about this offer: Please contact rebate@garmin.com

To check the status online, please visit www.status-now.com or call 1-800-975-7814, Monday through Friday, 9 a.m. to 5 p.m. MT.

Garmin recommends making a copy of your receipt and completed rebate coupon for your records. Once we receive your rebate, please allow 6-10 weeks to process your rebate request. Canadian customers, please allow additional 4-8 weeks to receive your rebate after it has been processed.

Terms and Conditions: This rebate is redeemable only by residents of the U.S. and Canada. Rebate may not be combined with any other offer directly from Garmin. Garmin reserves the right to rescind or change this offer. Rebate is paid in U.S. dollars. Recipient is responsible for any applicable taxes. This is an end consumer rebate that is not intended for Garmin dealers. Limit 3 rebates per customer. Limit 1 rebate per valid product serial number. Only the actual purchaser of the eligible Garmin product qualifies for this rebate offer. This rebate only applies to the products listed on this rebate coupon. Refurbished or newly overhauled products do not qualify for the rebate. Requests for multiple rebates from groups, clubs or organizations will not be honored. Void where prohibited or otherwise restricted by law.